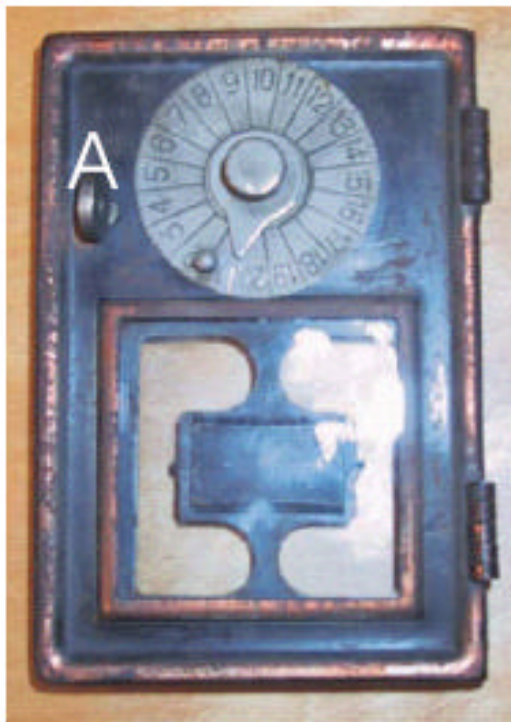


Old Style Mail Box Locks



Old Style Mail Box Door



Mail Box Door Inside Cover Removed



There are two dials to use to open the Mail Box. Turn thumb turn "A" to the right while turning the Large Dial and feel for the large gate in the first wheel "2". This will be the first combo. Leave this Dial in place and turn the Small Dial with arrow point feeling for the large gate in the second wheel "4".

Leave dials in place and turn the Thumb Turn and open the mailbox door.

"1" is the inner part of the first dial. Placed in a different position the combination of the first wheel can be changed.

"3" is a brass spring spacer between the two dials. "4" is part of the second

dial. "5" is part of the second dial. This part is held with a machine screw to the small arrow pointed dial and is holding the complete dial contraption in place. In "5" is a small screw, which could be placed in a different positions on the second dial; to change this combination.

When combination can't be found, drill a small hole on back or bottom of the Mail Box and with a wire probe, push side ways on the locking bar.