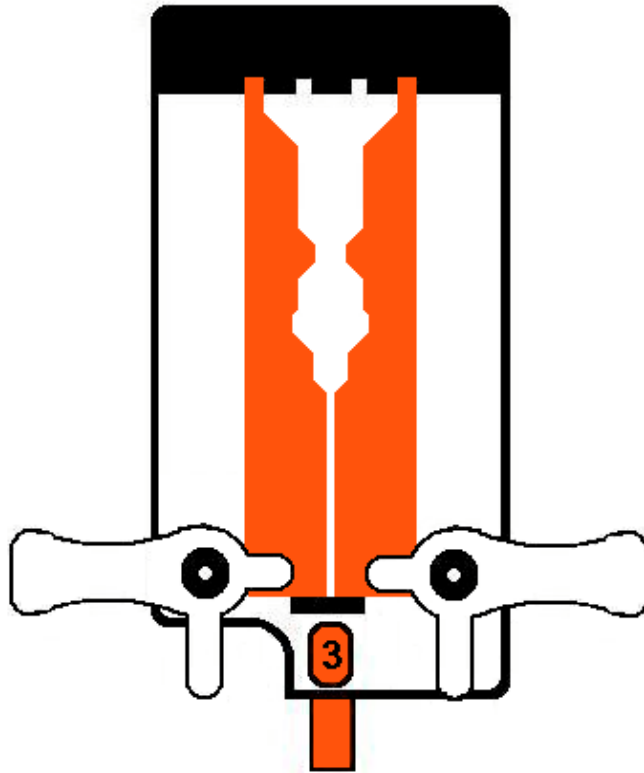


# CODE JAW



**Laser Security Products**

# Index

<b>INTRODUCTION .....</b>	<b>2</b>
<b>CODE JAW DESCRIPTION</b>	
Parts List and Illustration .....	3
Key Blade Description and Illustration .....	3
<b>CODE CARD DESCRIPTION</b>	
Detailed Description and Illustration .....	4 & 5
<b>CUTTING THE KEY BLADE</b>	
Contour – Laser Cut Explained .....	6
Tip Slope Cuts .....	7
<b>GAUGING KEY IN THE 1200 CODE MACHINE</b>	
Tip Stops .....	8 & 9
<b>SECURING KEY BLADE IN CODE JAW</b>	
Securing Key Blade .....	10
Illustrations .....	10
Space Bar Positioning – Code Jaw Stop .....	11
<b>ADJUSTING DUPLICATOR GUIDE AND CUTTER ALIGNMENT</b>	
Adjusting Duplicator Guide And Cutter Alignment .....	11
<b>CUTTING (TRACING) THE KEY</b>	
Cutting (Tracing) The Key .....	11
<b>HELPFUL HINTS – TIPS .....</b>	<b>12</b>
<b>PRODUCT REGISTRATION .....</b>	<b>13</b>

## Introduction

Thank you for choosing the Laser Security Products "**Code Jaw**" for your high security automotive code cutting needs.

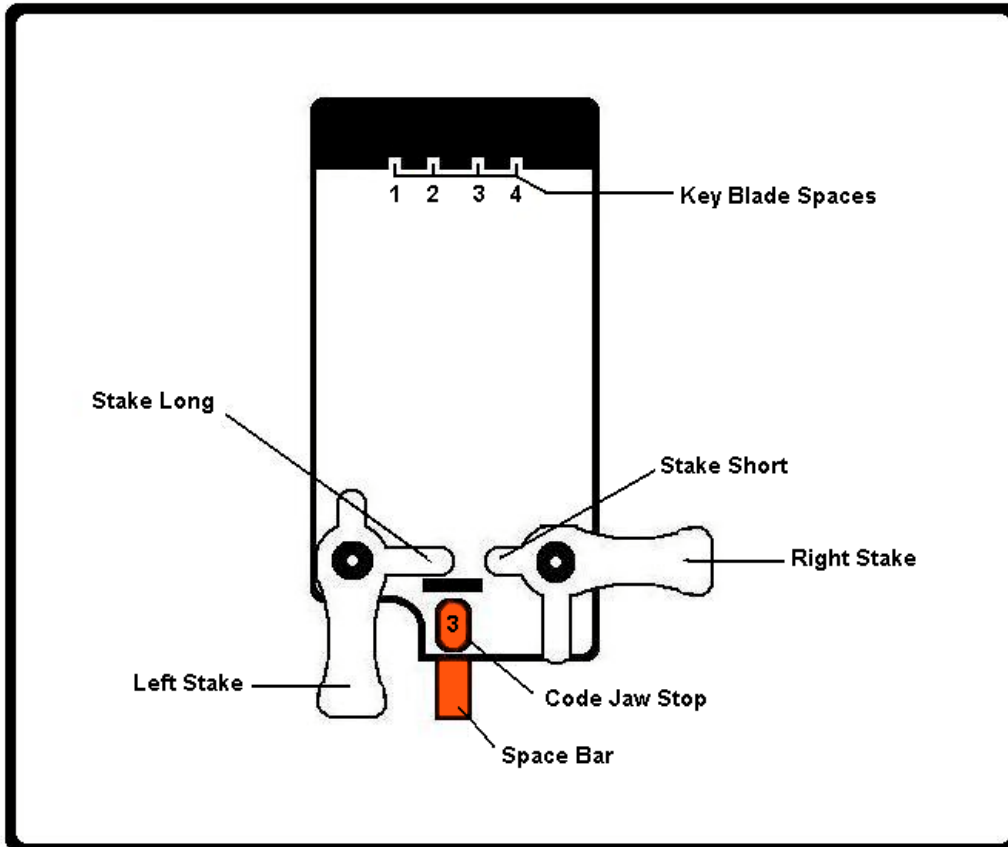
Say goodbye to those bulky space and depth keys that are not only time consuming, but also produce a key that is unattractive and unprofessional in appearance.

The Laser Security Products "**Code Jaw**" will enable you to quickly and accurately code cut high security automotive keys, producing an attractive contour/laser cut key that looks factory, while using your existing code machine and a high security duplicator.

Read the instructions carefully, make sure you fully understand the procedure and in no time you will be zipping out a code cut key in minutes.

# CODE JAW DESCRIPTION

## Parts List



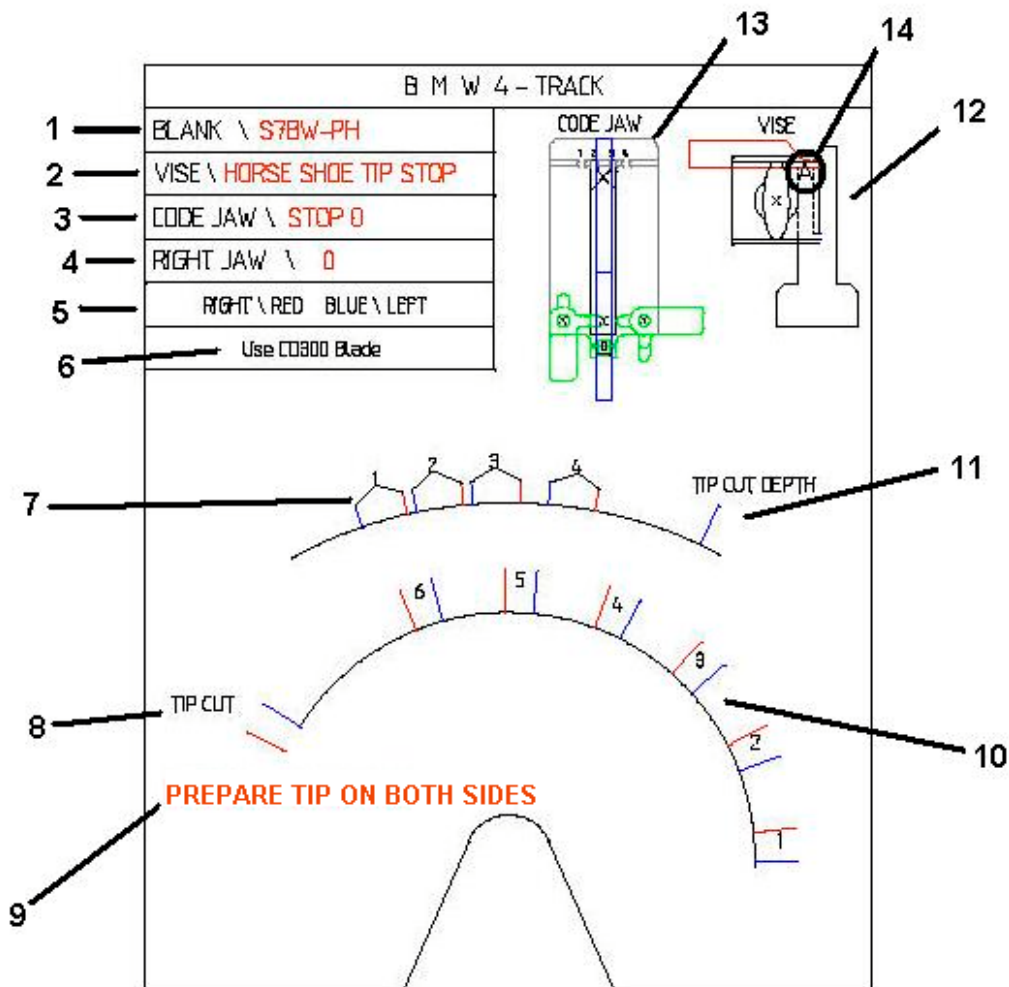
## Key Blades



The key blades are designed to fit into the jaw and be used as a pattern. They are **not** reusable, so keep enough in stock for future code keys.

The CD300 key blade will be used more often than the CD350. The code card will indicate what blade to use in each application.

## CODE CARD DESCRIPTION



At first appearance the card may look intimidating, but if you study the illustration and it's descriptions, you should have no problem understanding.

1. Proper key blank number
2. This designates how to properly gauge the key blade in the 1200 code machine.
3. Indicates the Space Bar position on the Code Jaw. (There are 5 positions)
4. Indicates the correct position to stop the key blank in the duplicator.
5. Most cards will have red and blue depth/space marks. When cutting the right track, use the red marks and when cutting the left track, use the blue marks.
6. Indicates the proper key blade(s).
7. These are the depth marks.

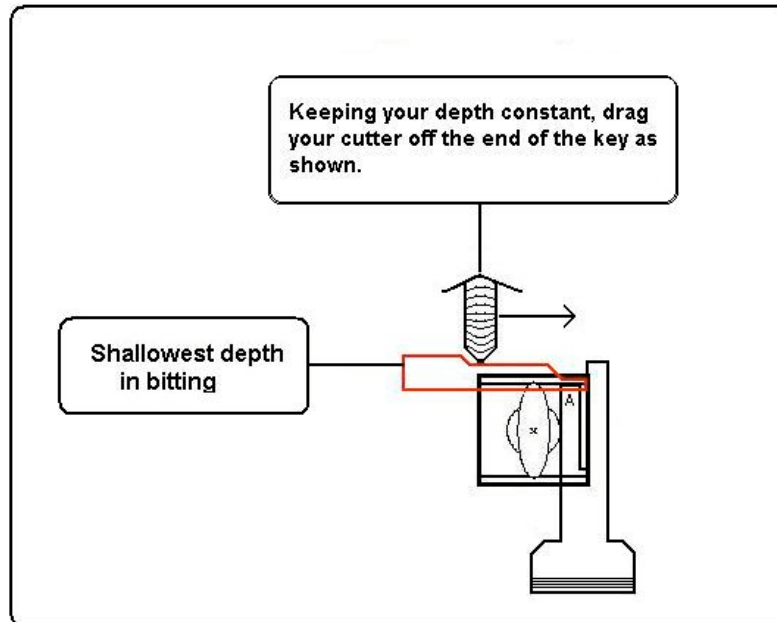
*Remember:* **Red** is for the right track – **Blue** is for the left track.

## CODE CARD DESCRIPTION (continued)

8. Tip cut space indicator: It will be necessary on some keys to prepare the tip slope onto the key blade, the card will indicate as shown when to do so. Pay attention to the notes, some keys require you to tip slope only the left track and not the right, etc.
9. Special notes you must pay attention to.
10. These are the space marks.  
  
*Again remember, **Red** is for the right track – **Blue** is for the left track.*
11. Tip cut depth indicator: When required to prepare the tip slope, this is the depth at which you will make the cut.
12. 1200 Vise illustration. We have included an illustration of the proper way to hold the blades in the 1200 machine. To ensure your understanding, we have included a detailed description later in the instructions.
13. Code Jaw illustration: This illustration will give you the proper space(s) to insert the cut key blade as well as the proper spacebar position.
14. Most keys will require the use of Vise Jaw A, but always check to make sure.

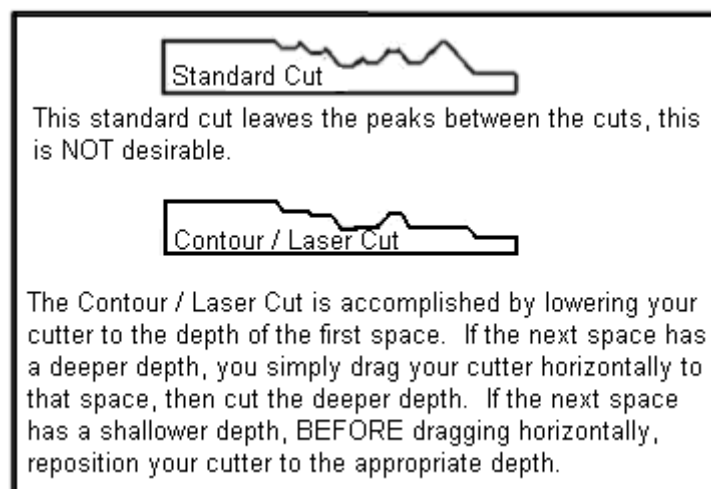
## CUTTING THE KEY BLADE

Once you have obtained the proper bitting for the key, it's time to cut the key blade. Install the proper key blade in the code machine (CD 300 or CD350, check the card) and ensure you are gauging it properly. Determine the shallowest depth in the key, (example: for a bitting that is 235424, the shallowest depth is a #2). Starting at the #1 space cut down to a #2 depth and drag the cutter all the way off the tip of the key. This will prepare all spaces to the shallowest depth of the key you are cutting. See illustration below.



## Contour / Laser Cut Explained

Once you have prepared the key as shown, go back to the #1 space and “contour / laser” cut the bittings. A “contour / laser” cut will enable the finished key to work smoother and look better. If you are not familiar with this technique, see the illustration below for an example.

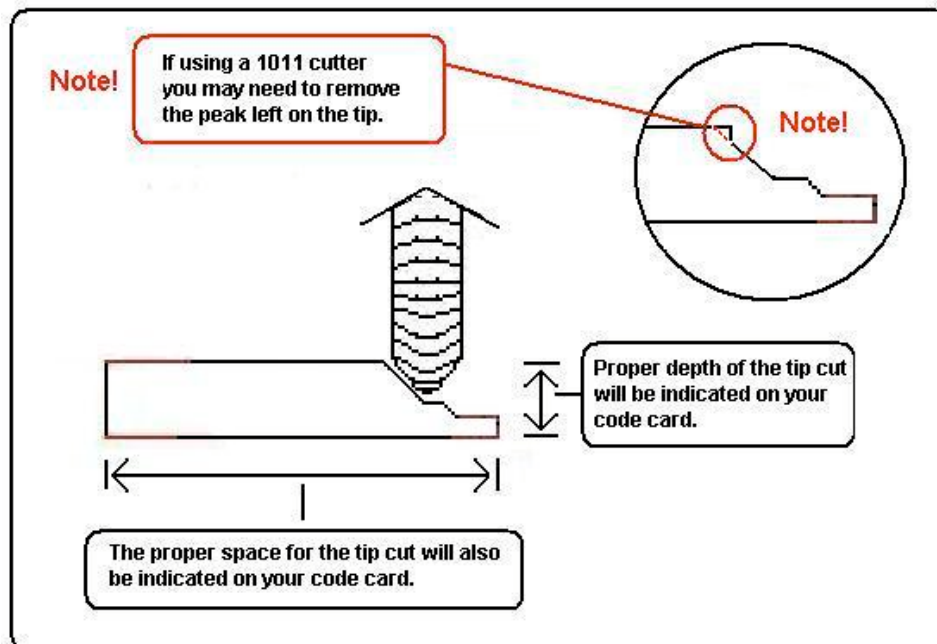


## Tip Slope Cuts

Because some high security keys are wider than others, the tip slope will not line up in the correct position for some keys. When this happens, you will be required to pre-cut a tip slope on the CD300 or CD350 key blade. The code card will indicate when and where to cut this slope.

NOTE: Some keys require the tip slope cut on one side, while others may require the tip slope cut on both sides.

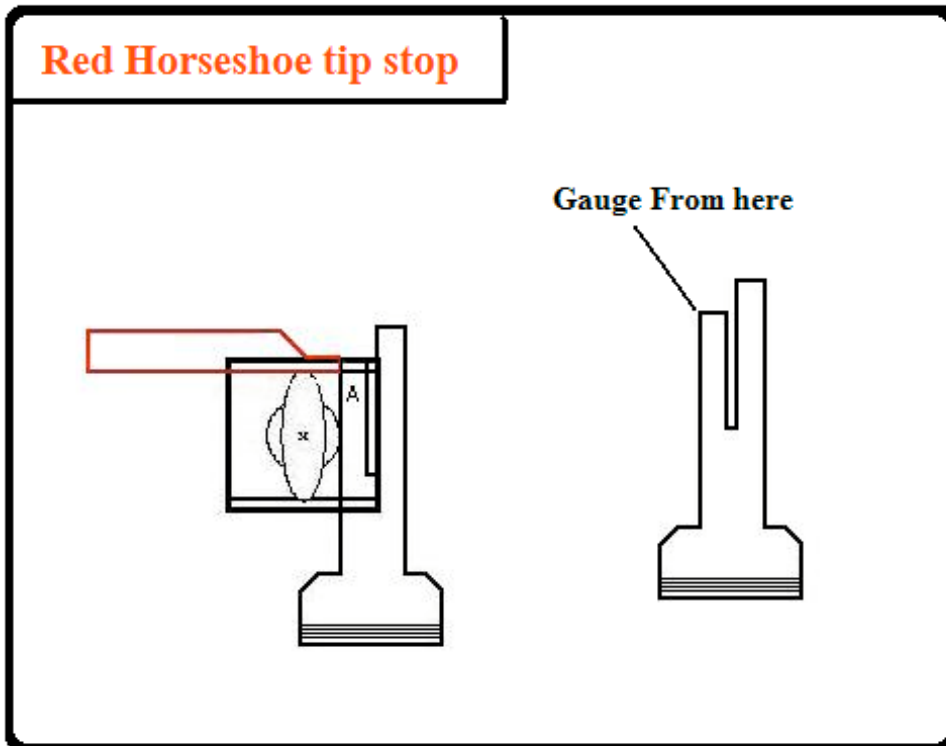
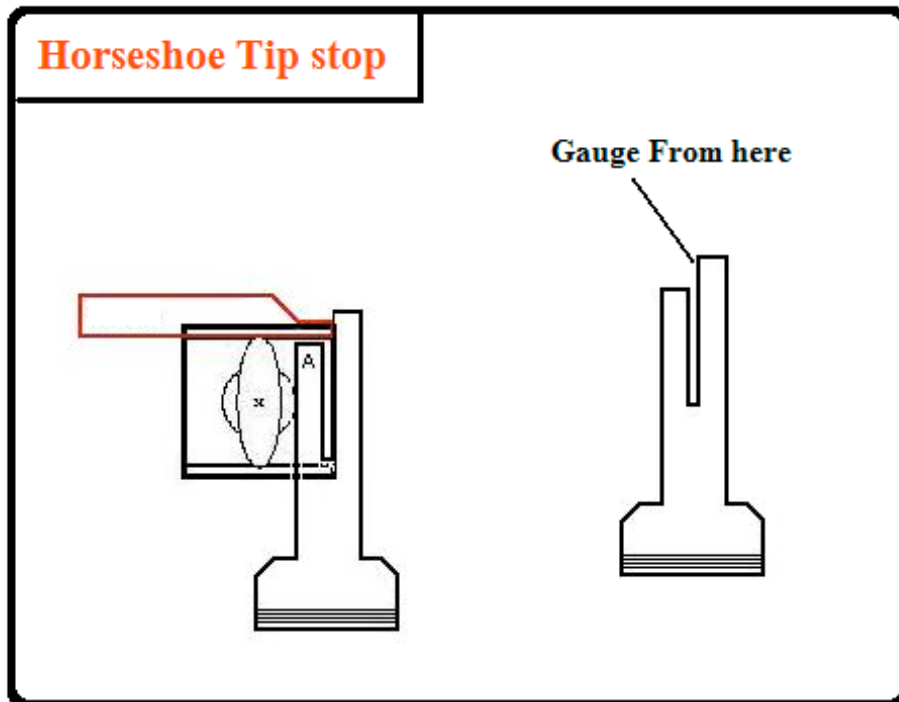
Here is an illustration of how to cut the tip and what it will look like.



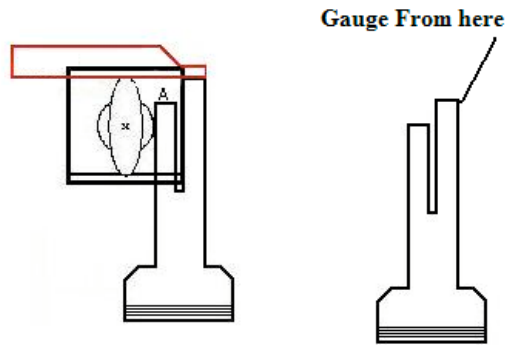


## GAUGING KEY IN THE 1200 CODE MACHINE

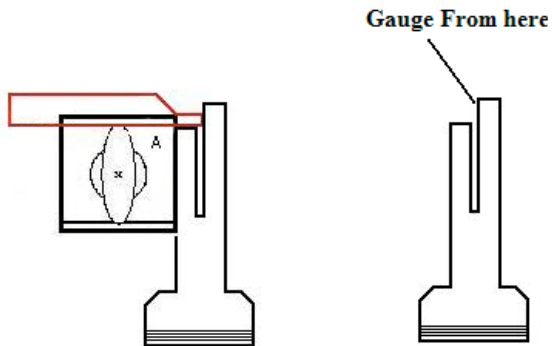
Some high security keys have quite a few bittings on them, so in order to reach the first space; we had to come up with 2 custom gauging points. The following illustrations will explain the procedure. The code card will indicate which gauge / stop to use.



**Stop 3**

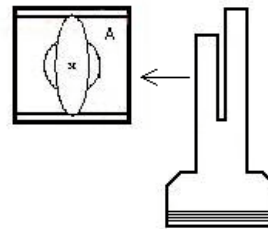


**Stop 4**



**\*Note\***

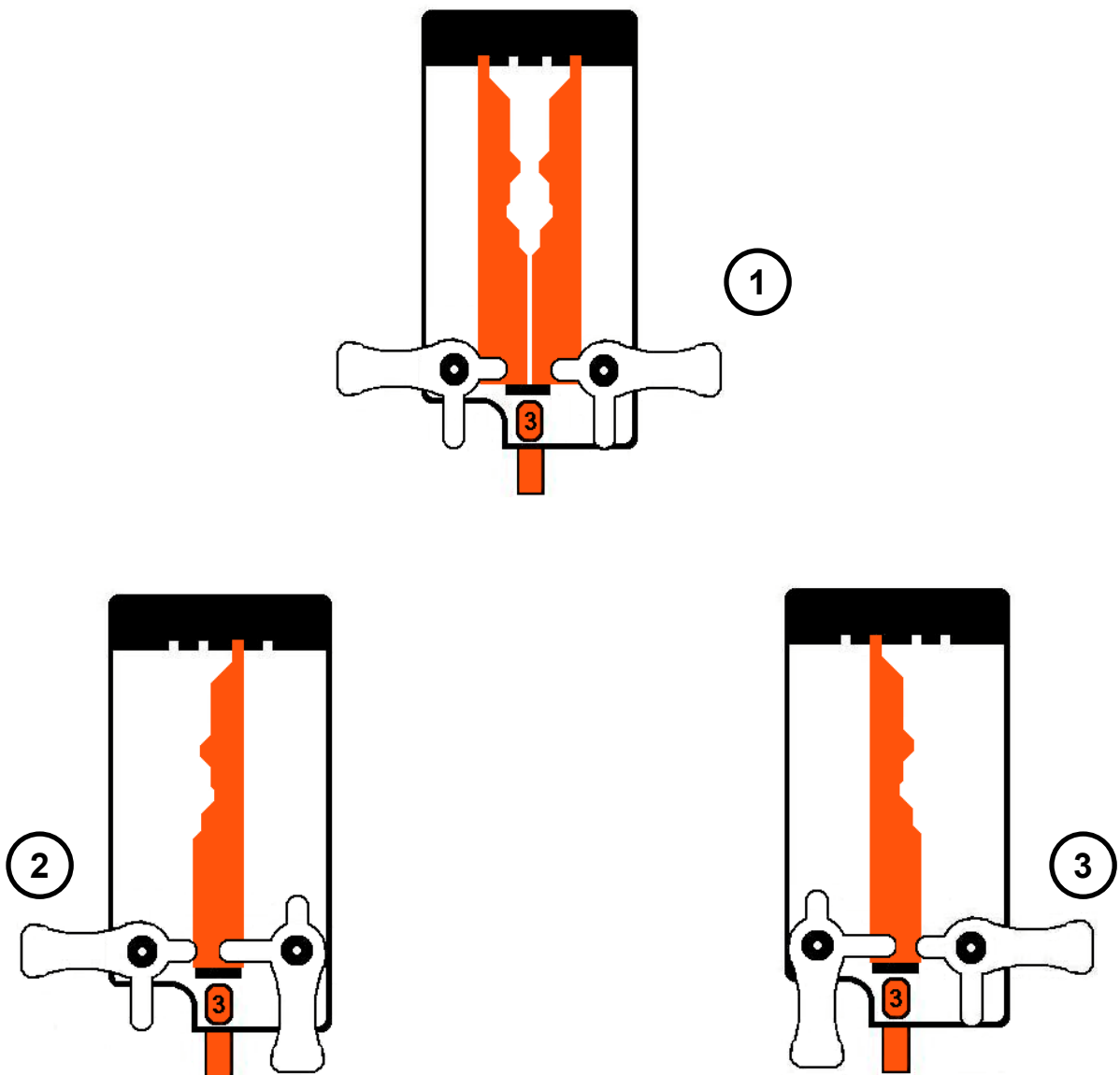
The horseshoe stop just sits on the side of the jaw



## SECURING KEY BLADE IN CODE JAW

Place tip of key blade into the appropriate Key Blade Space (1,2,3, or 4). To ensure proper alignment, the un-cut side of the key blade must be firmly against the stake while tightening with the enclosed Allen Wrench.

NOTES: The Code Jaw is designed with four Key Blade Spaces for key placement. The stakes located on the lower right and left side of the Code Jaw are designed to hold the key blade securely and accurately. The Short Stake is used with Spaces 1 & 4 (illustration #1). The Long Stake is used with Spaces 2 & 3 (illustrations #2 & #3).



## SPACE BAR POSITIONING – CODE JAW STOP

Refer to the code card, which corresponds to the particular key you are cutting to find the appropriate Code Jaw Stop position. The selected position will be displayed in the Code Jaw Stop window. (possible settings are 0 through 4).

## ADJUSTING DUPLICATOR GUIDE AND CUTTER ALIGNMENT

Clamp the Code Jaw in the duplicator (the Space Bar Stop should rest lightly against the jaw of the duplicator) then, lower the guide until it touches the surface of the Code Jaw. Place a shim on the cutter jaw (a sheet of typing paper is perfect) and lower the cutter to the shim (surface of the paper).

Note: The purpose of the paper shim is to allow just enough clearance to avoid cutting into the cutter jaw.

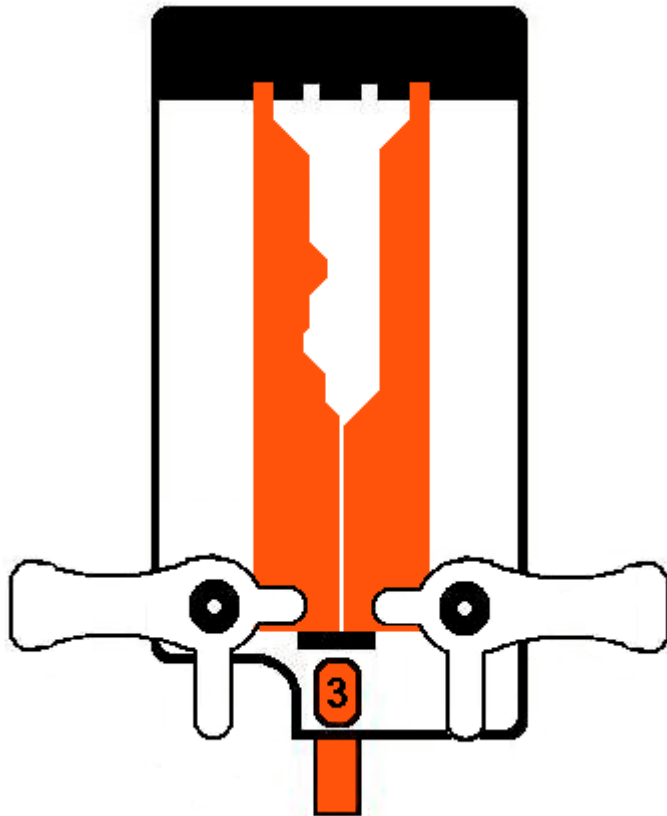


## CUTTING (TRACING) THE KEY

The cutter rotation only allows you to cut smoothly in one direction. If you are cutting internal cuts, always start on the right side and then end on the left side of the cut. This will cut a smooth key. On external cuts, also start on the right side.

## HELPFUL HINTS – TIPS

1. When cutting a Lexus short key, widen your #3 depths slightly.
2. When cutting VW keys, we suggest a key blade be prepared to all #3 depths (to act as a guide). This key blade tip should be placed in the #4 position. (see illustration below).



**PRODUCT REGISTRATION  
CODE JAW**

Name: \_\_\_\_\_

Company Name: \_\_\_\_\_

Address: \_\_\_\_\_

\_\_\_\_\_

\_\_\_\_\_

Phone #: \_\_\_\_\_

Fax #: \_\_\_\_\_

Email Address: \_\_\_\_\_

**Return this form by fax or mail:**

Laser Security Products

Fax#: \_\_\_\_\_

*Address*

*City, State Zip*

**in order to receive updated product information, access to upcoming web site,  
and product support.**







# ITL – Code Jaw

## Space & Depth Information

<b>BMW 4-Track 1V-5V</b>									
<i>LEFT</i>					<i>RIGHT</i>				
DSD	Space		Depth		DSD	Space		Depth	
812	1	1180	0	302	813	1	1118	0	302
	2	1050	1	302		2	1000	1	284
	3	920	2	275		3	878	2	257
	4	802	3	254		4	753	3	233
	5	675	4	221		5	623	4	202
	6	545	5	150 *		6	503	5	106 *
	7	275 *				7	260 *		
<b>CODE JAW</b>		<b>MATRIX RIGHT JAW</b>			<b>BLADE SPACES</b>			<b>INSERT</b>	
STOP 0		STOP 0			2 & 3			2	

**\* SEE NOTE ON PAGE 5**

<b>Mercedes 2-Track (10 &amp; 93 Plus)</b>									
<i>LEFT</i>					<i>RIGHT</i>				
DSD	Space		Depth		DSD	Space		Depth	
814	1	1204	0	248	814	1	1225	1	248
	2	1113	1	248	Bow Cut	2		2	
	3	1022	2	224	&	3		3	
	4	931	3	200	Tip Cut	4		4	
	5	840	4	176		5		5	
	6	749	5	152		6		6	
	7	650				7		7	
	8	567				8		8	
	9	476				9		9	
	10	305				10		10	
<b>CODE JAW</b>		<b>MATRIX RIGHT JAW</b>			<b>BLADE SPACES</b>			<b>INSERT</b>	
Up to 92 STOP 1		STOP 2			3			2	
93 plus Stop 2									

## ITL – Code Jaw Space & Depth Information

<b>Volks 4-Track</b>									
<i>LEFT</i>					<i>RIGHT</i>				
DSD	Space		Depth		DSD	Space		Depth	
817	1	1281	0						
	2	1163	1	258					
	3	1045	2	234					
	4	927	3	210					
	5	809	4	186					
	6	691							
	7	573							
	8	455							
<b>CODE JAW</b>		<b>MATRIX RIGHT JAW</b>			<b>BLADE SPACES</b>		<b>INSERT</b>		
STOP 0		STOP 0			1		2		

<b>Mercedes 4-Track</b>									
<i>LEFT</i>					<i>RIGHT</i>				
DSD	Space		Depth		DSD	Space		Depth	
802	1	1180	0	300					
	2	1078	1	300					
	3	960	2	279					
	4	858	3	256					
	5	748	4	233					
	6	657	5	210					
	7	566	6	200					
	8	475							
<b>CODE JAW</b>		<b>MATRIX RIGHT JAW</b>			<b>BLADE SPACES</b>		<b>INSERT</b>		
STOP 0		STOP 0			2 & 3		2		

# ITL – Code Jaw Space & Depth Information

Infiniti									
<i>LEFT</i>					<i>RIGHT</i>				
DSD	Space		Depth		DSD	Space		Depth	
804	1	1035	0	300	805	1	1035	0	300
	2	910	1	310		2	910	1	288
	3	790	2	285		3	790	2	262
	4	670	3	260		4	670	3	243
	5	550	4	240		5	550	4	215
CODE JAW          MATRIX RIGHT JAW          BLADE SPACES          INSERT									
STOP 1			STOP 1			2 & 3			3

\* Represents the ramp cut at the end of the key. If it has a ramp cut the last cut of the code should be the last cut and the deepest. Example: Honda 21334-7 (seven) is the tip cut and the sixth space, for example: the new code would be 213347.

**B M W 4 - TRACK**

BLANK \ S7BW-PH	
WISE \ HORSE SHOE TIP STOP	
CODE JAW \ STOP 0	
RIGHT JAW \ 0	
RIGHT \ RED BLUE \ LEFT	
Use CD300 Blade/CUTTER 14MC	

PREPARE TIP ON BOTH SIDES

Copyright 2004, Laser Security Products  
\*All rights reserved

Bianchi

**B M W 4 - TRACK**

BLANK \ S7BW-PH	
WISE \ HORSE SHOE TIP STOP	
CODE JAW \ STOP 0	
RIGHT JAW \ 0	
RIGHT \ RED BLUE \ LEFT	
Use CD300 Blade/CUTTER 14MC	

PREPARE TIP ON BOTH SIDES

Copyright 2004, Laser Security Products  
\*All rights reserved

Bianchi

HONDA 4-TRACK	
BLANK \ H001	BLUE \ LEFT    RED \ RIGHT
WISE \ 3	
CODE JAW \ STOP 4	
RIGHT JAW \ 3	
BLADE SPACES \ 2 & 3	
<p style="text-align: center;">* SPECIAL NOTES *</p> <p style="text-align: center;">LEFT &amp; RIGHT BLADE NEEDS TO BE PREPARED ON TIP</p> <p style="text-align: center;">RT BLADE CD300 \ LT BLADE CD350</p>	
Cutter CW14MC	

\* IMPORTANT \*

CUT THE RIGHT & LEFT BLADE TO ALL  
ONES FIRST . THEN APPLY CUTS .  
KEY WILL NOT ENTER IF NOT DONE  
PROPERLY.

CUT TO #1 THEN ADVANCE TO 1ST SPACE

Copyright 2004 Laser Security Products  
All rights reserved

BIANCHI

HONDA 4-TRACK	
BLANK \ H001	BLUE \ LEFT    RED \ RIGHT
WISE \ 3	
CODE JAW \ STOP 4	
RIGHT JAW \ 3	
BLADE SPACES \ 2 & 3	
<p style="text-align: center;">* SPECIAL NOTES *</p> <p style="text-align: center;">LEFT &amp; RIGHT BLADE NEEDS TO BE PREPARED ON TIP</p> <p style="text-align: center;">RT BLADE CD300 \ LT BLADE CD350</p>	
Cutter CW14MC	

\* IMPORTANT \*

CUT THE RIGHT & LEFT BLADE TO ALL  
ONES FIRST . THEN APPLY CUTS .  
KEY WILL NOT ENTER IF NOT DONE  
PROPERLY.

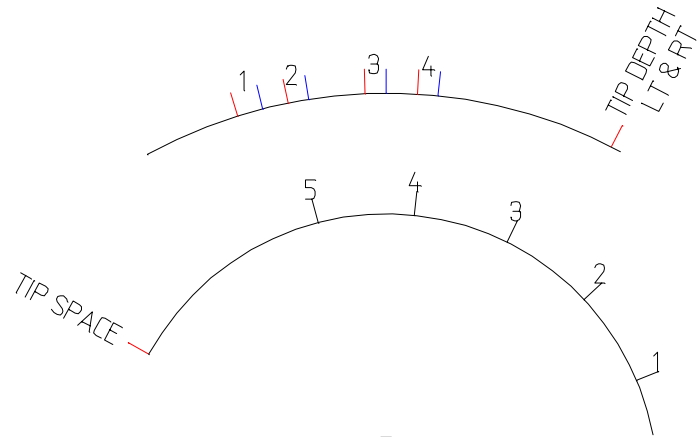
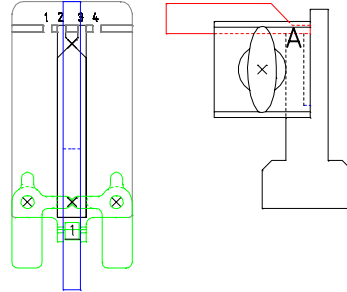
CUT TO #1 THEN ADVANCE TO 1ST SPACE

Copyright 2004 Laser Security Products  
All rights reserved

BIANCHI

**I N F I N I T I**

BLANK \ INF90
WISE \ HORSE SHOE TIP STOP
CODE JAW \ STOP 1
RIGHT JAW \ 1
RIGHT \ RED    BLUE \ LEFT
CD300 BLADE / SPACES 2 & 3
Cutter Cw1011

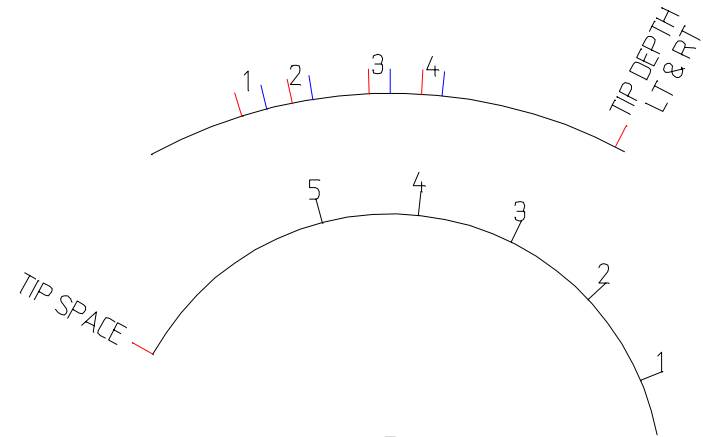
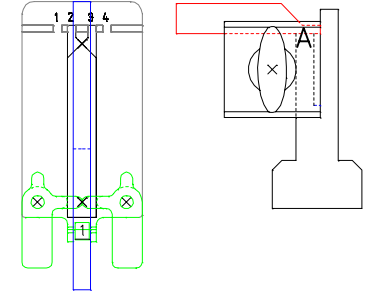


Copyright 2004, Laser Security Products  
\*All rights reserved

BIANCHI

**I N F I N I T I**

BLANK \ INF90
WISE \ HORSE SHOE TIP STOP
CODE JAW \ STOP 1
RIGHT JAW \ 1
RIGHT \ RED    BLUE \ LEFT
CD300 BLADE / SPACES 2 & 3
Cutter Cw1011



Copyright 2004, Laser Security Products  
\*All rights reserved

BIANCHI

L E X U S 4-TRACK

BLANK \ TOY48

WISE \ USE RED TIP STOP

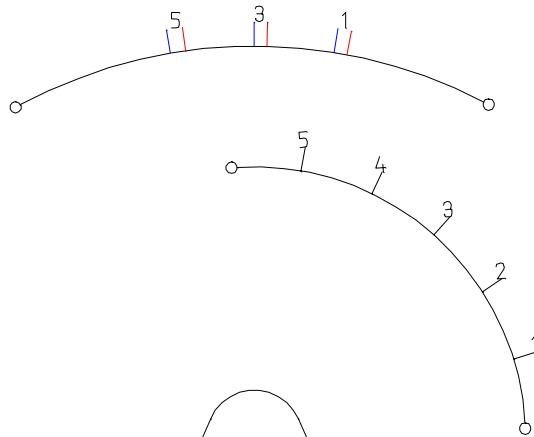
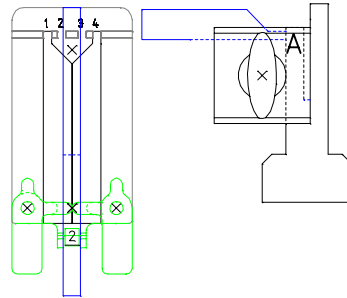
CODE JAW \ STOP 2

RIGHT JAW \ 2

RED RT \ BLUE LT

BLADE SPACES 1 & 4

Use Blade CD300/CW1011



Copyright 2004, Laser Security Products  
\*All rights reserved

BIANCHI

L E X U S 4-TRACK

BLANK \ TOY48

WISE \ USE RED TIP STOP

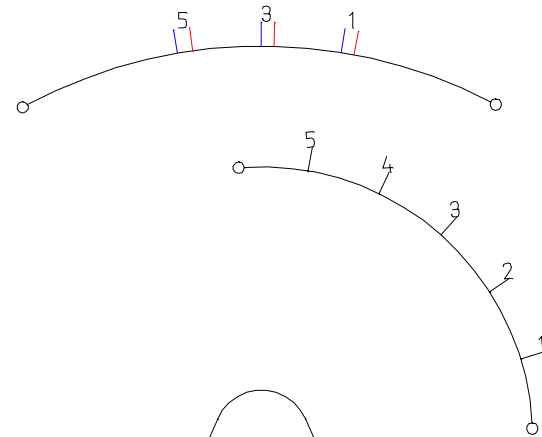
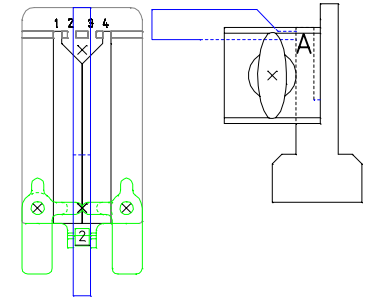
CODE JAW \ STOP 2

RIGHT JAW \ 2

RED RT \ BLUE LT

BLADE SPACES 1 & 4

Use Blade CD300/CW1011

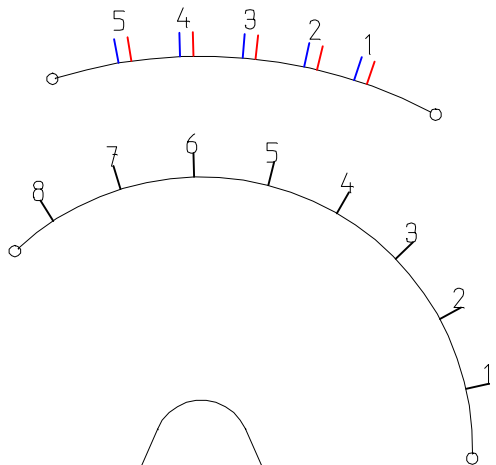
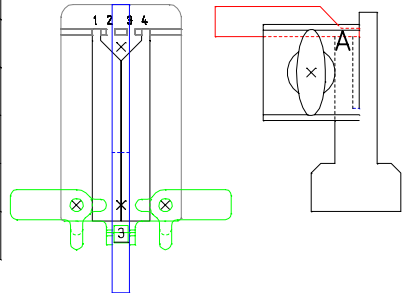


Copyright 2004, Laser Security Products  
\*All rights reserved

BIANCHI

# Lexus 4-track

BLANK \ LXP90
WISE \ HORSE SHOE TIP STOP
CODE JAW \ STOP 3
RIGHT JAW \ 3
Blade Spaces 1 & 4
Use Blade CD300\Cutter CW14

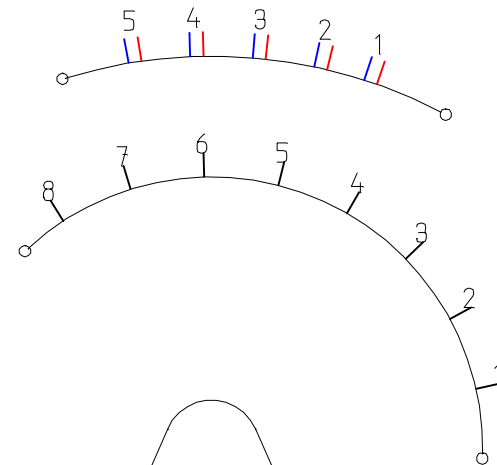
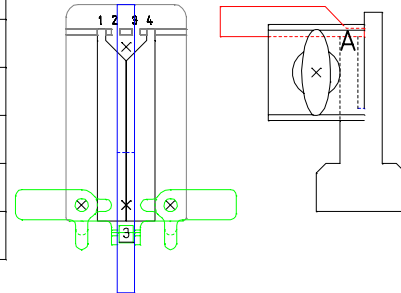


Copyright 2004, Laser Security Products  
\*All rights reserved

Bianchi

# Lexus 4-track

BLANK \ LXP90
WISE \ HORSE SHOE TIP STOP
CODE JAW \ STOP 3
RIGHT JAW \ 3
Blade Spaces 1 & 4
Use Blade CD300\Cutter CW14



Copyright 2004, Laser Security Products  
\*All rights reserved

Bianchi



### Mercedes 2-track

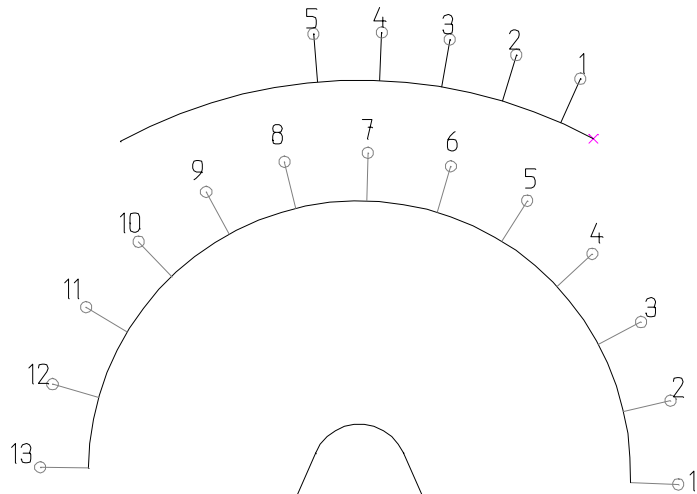
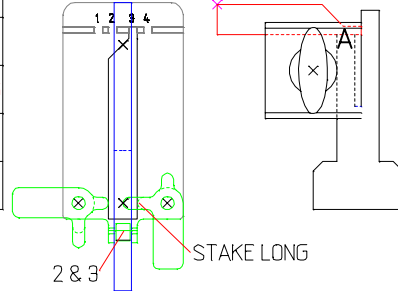
BLANK \ S34YS-P

WISE \ HORSE SHOE TIP STOP

CODE JAW \ 10-STOP 2\13-STOP3

RIGHT JAW \ 10Cut 2\13 Cut 3

USE LS300 BLADE



### Mercedes 2-track

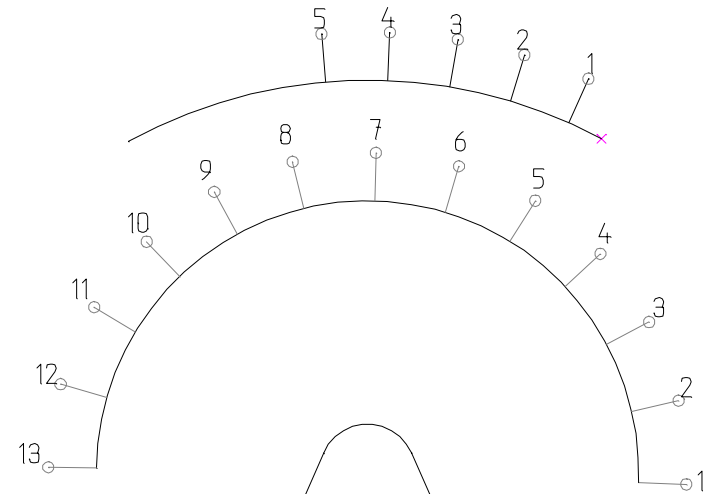
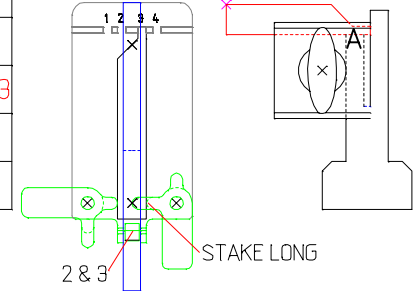
BLANK \ S34YS-P

WISE \ HORSE SHOE TIP STOP

CODE JAW \ 10-STOP 2\13-STOP3

RIGHT JAW \ 10Cut 2\13 Cut 3

USE LS300 BLADE



S A A B 2-TRACK

BLANK \ YM30-P

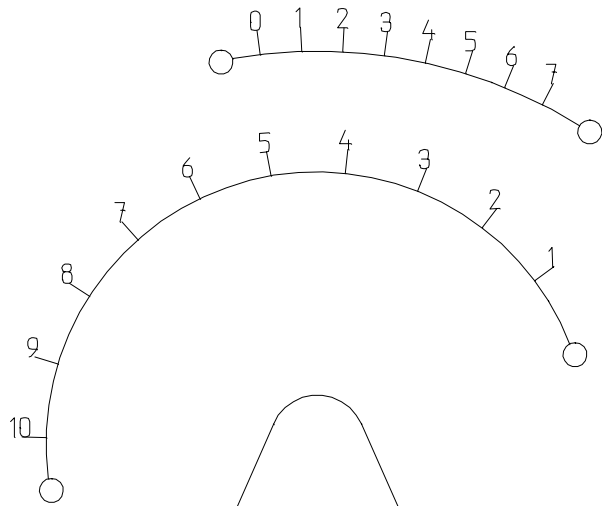
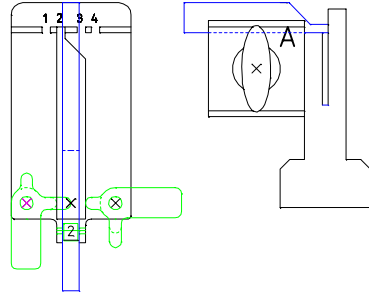
WISE \ HORSE SHOE TIP STOP

CODE JAW \ STOP 2

RIGHT JAW \ 2

BLADE SPACE \ 2

Use Blade CD350



Bianchi

Copyright 2004, Laser Security Products  
\*All rights reserved

S A A B 2-TRACK

BLANK \ YM30-P

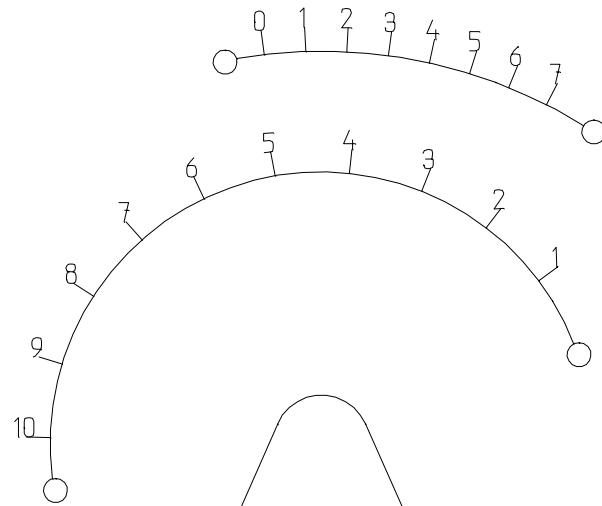
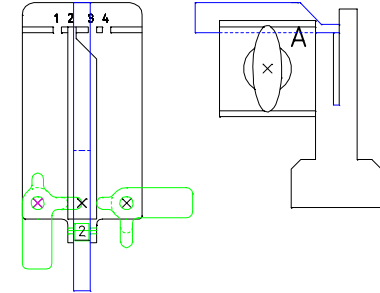
WISE \ HORSE SHOE TIP STOP

CODE JAW \ STOP 2

RIGHT JAW \ 2

BLADE SPACE \ 2

Use Blade CD350



Bianchi

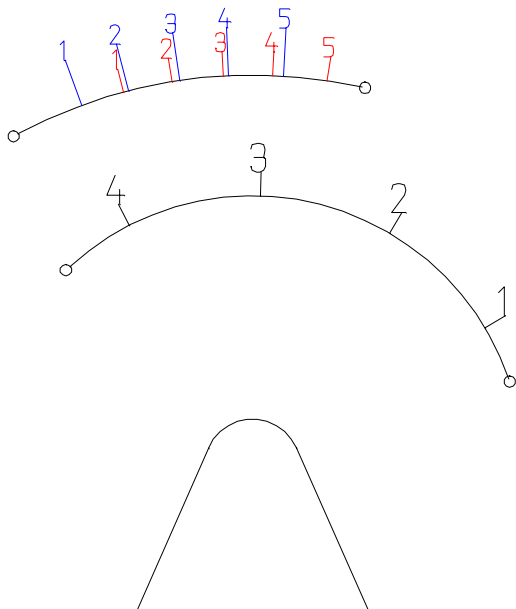
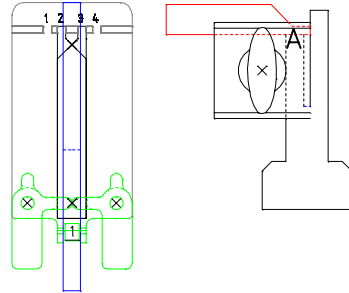
Copyright 2004, Laser Security Products  
\*All rights reserved

<b>V O L K S W A G E N</b>	
BLANK \ HU66-P	
VISE \ HORSESHOE STOP 3	
CODE JAW \ STOP 0	
RIGHT JAW \ 0	
Blade Space 1	
Use Blade CD 300	
<p style="margin-left: 20px;">volks blade</p>	
<p>( NOTE )</p> <p style="color: red;">Do not sit blade all the way into right side of matrix right jaw . This is designed to be set on the lip of the key.</p>	
<p>Bianchi</p>	
Copyright 2004, Laser Security Products *All rights reserved	

<b>V O L K S W A G E N</b>	
BLANK \ HU66-P	
VISE \ HORSESHOE STOP 3	
CODE JAW \ STOP 0	
RIGHT JAW \ 0	
Blade Space 1	
Use Blade CD 300	
<p style="margin-left: 20px;">volks blade</p>	
<p>( NOTE )</p> <p style="color: red;">Do not sit blade all the way into right side of matrix right jaw . This is designed to be set on the lip of the key.</p>	
<p>Bianchi</p>	
Copyright 2004, Laser Security Products *All rights reserved	

# VOLVO 4-TRACK EARLY

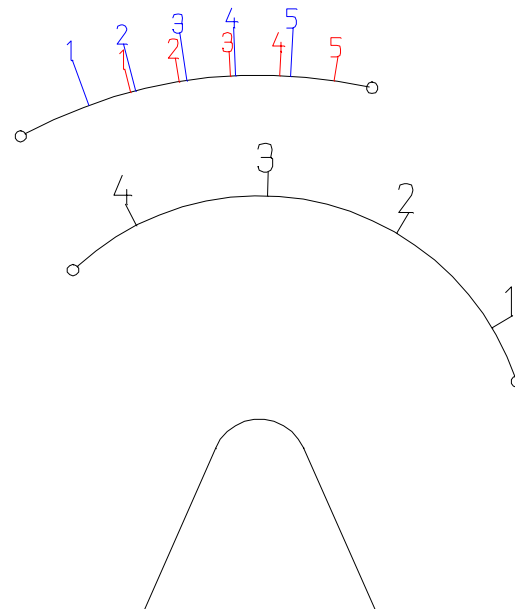
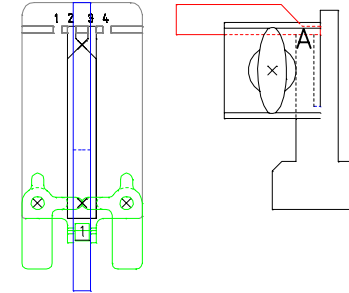
BLANK \ NE66-P  
VISE \ HORSE SHOE TIP STOP  
CODE JAW \ STOP 1  
RIGHT JAW \ 1  
CD300 Blade / Spaces 2&3  
Cutter CW1011



Copyright 2004, Laser Security Products  
\*All rights reserved

# VOLVO 4-TRACK EARLY

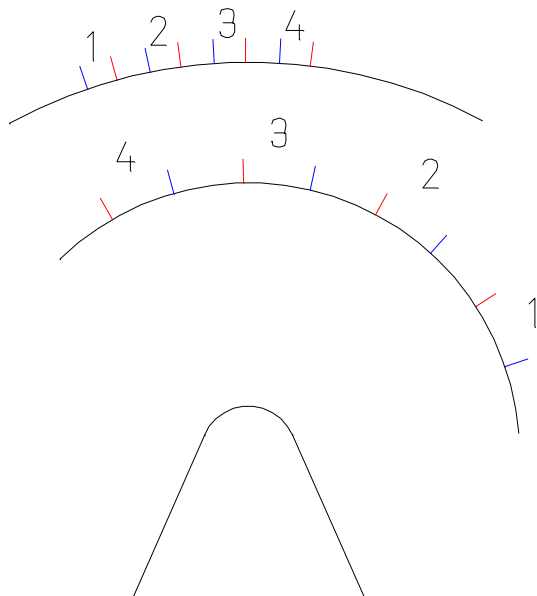
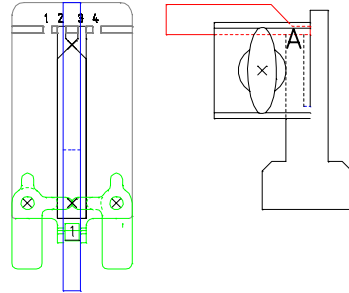
BLANK \ NE66-P  
VISE \ HORSE SHOE TIP STOP  
CODE JAW \ STOP 1  
RIGHT JAW \ 1  
CD300 Blade / Spaces 2&3  
Cutter CW1011



Copyright 2004, Laser Security Products  
\*All rights reserved

# VOLVO 4-TRACK 1V-5V

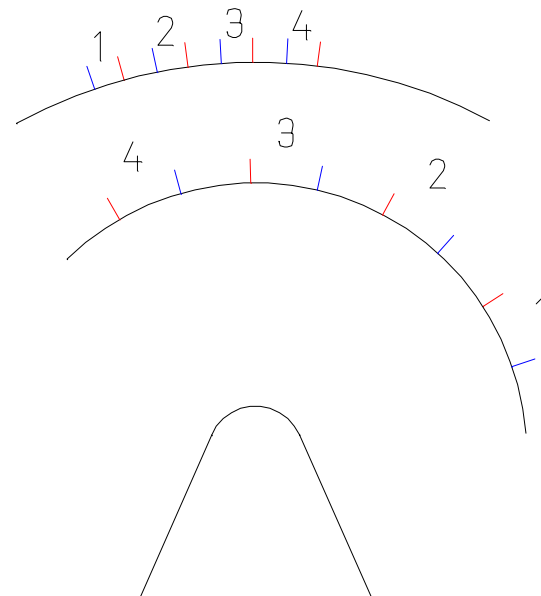
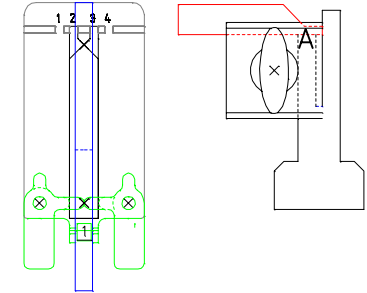
BLANK \ NE66-P
WISE \ HORSE SHOE TIP STOP
CODE JAW \ STOP 1
RIGHT JAW \ 1
Blades Spaces 2&3
Use CD300 Blade\Cutter CW1011



Copyright 2004, Laser Security Products  
\*All rights reserved

# VOLVO 4-TRACK 1V-5V

BLANK \ NE66-P
WISE \ HORSE SHOE TIP STOP
CODE JAW \ STOP 1
RIGHT JAW \ 1
Blades Spaces 2&3
Use CD300 Blade\Cutter CW1011



Copyright 2004, Laser Security Products  
\*All rights reserved